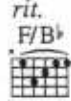


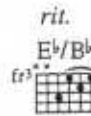
# YOU MUST LOVE ME

1997 ACADEMY AWARD WINNING SONG FROM THE MOTION PICTURE EVITA  
MUSIC BY ANDREW LLOYD WEBBER. LYRICS BY TIM RICE

♩ = 92



*a tempo*



*a tempo*



2<sup>o</sup> instr.



I. Where do we go from here?  
(Verse 2 see block lyric)

This is - n't where we in -



tend-ed to be. —

We had it all, —

you be - lieved - in me, —

I be -








lied— in you, — Cer-tain-ties dis-ap-







pear what do we do— for our dream to sur-vive,







how do we keep— all our pas-sions a-live as we used to do?—








Deep in my heart I'm con-veal-ing



things that I'm long-ing to say,                      scared to con-fess                      what I'm feel - ing

fright - ened you'll slip    a - way, you must love    me,                      you must love

me.                      You must love    me.

*Verse 2: (Instrumental 8 bars)*

Why are you at my side?  
 How can I be any use to you now?  
 Give me a chance and I'll let you see how  
 Nothing has changed.  
 Deep in my heart I'm concealing  
 Things that I'm longing to say,  
 Scared to confess what I'm feeling  
 Frightened you'll slip away,  
 You must love me.